

TECHNICAL SPECIFICATIONS

# 1500X

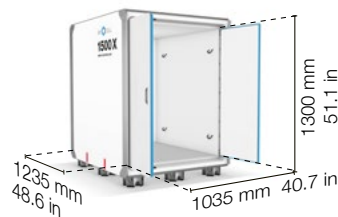
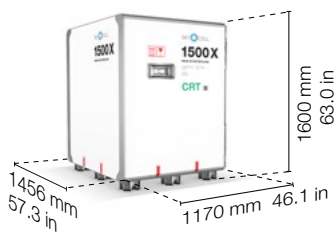
COL +2°C to +8°C

### X-tra Performance

Protecting temperature-sensitive pharma products at +15°C to +25°C, the 1500X-CRT redefines reliability with an unrivalled 270-hour independent runtime at +20°C and an audited excursion rate of <0.05%.

### Key Features

- **Door-to-door security** for an unbroken supply chain
- **Protection under extreme temperatures** across the entire globe
- **Versatile handling**  
Fast to load, easy to ship
- **Optimal placement** of four containers on one PMC-pallet
- **Self-recharging ability**  
in temperature controlled warehouses and trucks
- **Full payload preservation**  
Absorbing shock and vibration



4 containers fit on one PMC, 18 into a truck.

### Temperature

Operating range (External conditions)	<b>-40°C to +70°C</b>	<b>-40°F to +158°F</b>
Internal temperature range	<b>+2°C to +8°C</b>	<b>+36°F to +46°F</b>

### Performance

Independent runtime	<b>270 hours at +20°C</b>	<b>270 hours at +68°F</b>
---------------------	---------------------------	---------------------------

### Dimensions

External cube (volume)	<b>2.7 m³</b>	<b>95.35 ft³</b>
External dimensions (L x W x H)	<b>1456 x 1170 x 1600 mm</b>	<b>57.3 x 46.1 x 63.0 in</b>
Internal cube	<b>1.66 m³</b>	<b>58.6 ft³</b>
Internal dimensions (L x W x H)	<b>1235 x 1035 x 1300 mm</b>	<b>48.6 x 40.7 x 51.1 in</b>

### Weight

Tare weight ±5%	<b>379 kg</b>	<b>835 lbs</b>
Max payload weight	<b>1000 kg</b>	<b>2204 lbs</b>

### Data Logging Inside & Outside

Temperature	<b>-40°C to +70°C at 0.1°C resolution and ±0.5°C accuracy</b>
-------------	---



### Sustainable

Reduce CO<sub>2</sub> emissions by up to 50% compared to other solutions.



**Contact us today**  
pharma.containers@skycell.ch

TECHNICAL SPECIFICATIONS

# 1500X

COL +2°C to +8°C



**Designed for zero loss:** 270 hours independent runtime to protect medicine from door-to-door for an unbroken cold chain.



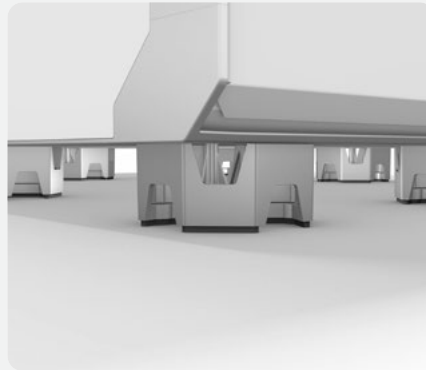
**Monitor shipment** conditions in real time on SkyMind to anticipate and identify lane risks.



**Less weight, less volume, lower costs—more payload space.** The 1500X's making it SkyCell's most sustainable container.



**400% stronger frame** using aerospace diecast technology.



Shock and vibration absorption.



High energy density and improved energy distribution system.

SkyCell Solutions. **Designed for Zero Product Loss**



**1500DF**

1500DF hybrid containers for transporting highly temperature-sensitive pharmaceuticals.

**Internal Temperature Ranges**  
-90°C to -20°C  
-90°C to -60°C



**Validaide**

Validaide is the digital backbone for pharma supply chain orchestration. Manage risk, improve performance, and make controlled, guided interventions before products are lost.



**Loggers**

SkyCell IoT loggers ensure continuous, seamless monitoring with real-time tracking, trajectory visualization, and instant alerts.



**Contact us today**  
pharma.containers@skycell.ch