

TECHNICAL SPECIFICATIONS

1500X

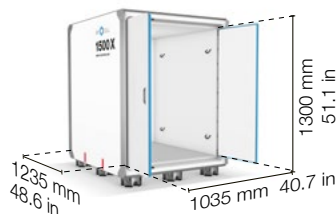
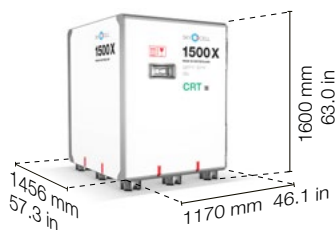
CRT +15°C to +25°C

X-tra Performance

Protecting temperature-sensitive pharma products at +15°C to +25°C, the 1500X-CRT redefines reliability with an unrivalled 270-hour independent runtime at +20°C and an audited excursion rate of <0.05%.

Key Features

- **Door-to-door security** for an unbroken supply chain
- **Protection under extreme temperatures** across the entire globe
- **Versatile handling**
Fast to load, easy to ship
- **Optimal placement** of four containers on one PMC-pallet
- **Self-recharging ability**
in temperature controlled warehouses and trucks
- **Full payload preservation**
Absorbing shock and vibration



4 containers fit on one PMC, 18 into a truck.

Temperature

Operating range (External conditions)	-40°C to +70°C	-40°F to +158°F
Internal temperature range	+15°C to +25°C	+59°F to +77°F

Performance

Independent runtime	270 hours at +20°C	270 hours at +68°F
---------------------	---------------------------	---------------------------

Dimensions

External cube (volume)	2.7 m³	95.35 ft³
External dimensions (L x W x H)	1456 x 1170 x 1600 mm	57.3 x 46.1 x 63.0 in
Internal cube	1.66 m³	58.6 ft³
Internal dimensions (L x W x H)	1235 x 1035 x 1300 mm	48.6 x 40.7 x 51.1 in

Weight

Tare weight ±5%	379 kg	835 lbs
Max payload weight	1000 kg	2204 lbs

Data Logging Inside & Outside

Temperature	-40°C to +70°C at 0.1°C resolution and ±0.5°C accuracy
-------------	---



Sustainable

Reduce CO₂ emissions by up to 50% compared to other solutions.



Contact us today
pharma.containers@skycell.ch

TECHNICAL SPECIFICATIONS

1500X

CRT +15°C to +25°C



Designed for zero loss: 270 hours independent runtime to protect medicine from door-to-door for an unbroken cold chain.



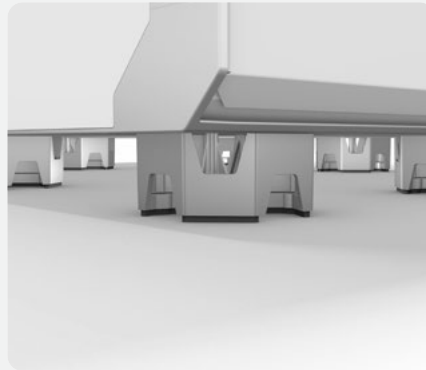
Monitor shipment conditions in real time on Validaide to anticipate and identify lane risks.



Less weight, less volume, lower costs—more payload space. The 1500X's making it SkyCell's most sustainable container.



400% stronger frame using aerospace diecast technology.



Shock and vibration absorption.



High energy density and improved energy distribution system.

SkyCell Solutions. **Designed for Zero Product Loss**



1500DF

1500DF hybrid containers for transporting highly temperature-sensitive pharmaceuticals.

Internal Temperature Ranges
-90°C to -20°C
-90°C to -60°C



Validaide

Validaide is the digital backbone for pharma supply chain orchestration. Manage risk, improve performance, and make controlled, guided interventions before products are lost.



Loggers

SkyCell IoT loggers ensure continuous, seamless monitoring with real-time tracking, trajectory visualization, and instant alerts.



Contact us today
pharma.containers@skycell.ch